

ZEN MASTER FOR AWS MEDIACONNECT

AWS MediaConnect Flows Managed & Monitored in ZEN Master

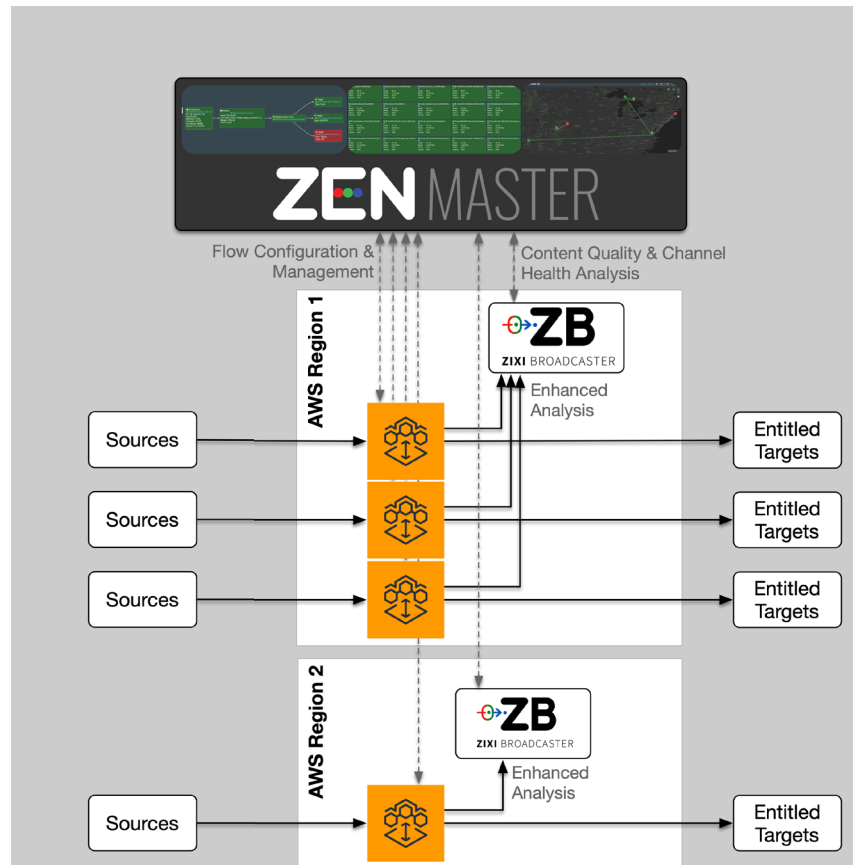
Built on Zixi's market leading SDVP, AWS Elemental MediaConnect is a high-quality cloud transport service for live video that delivers the reliability and security of satellite and fiber-optic combined with the flexibility, agility, and economics of IP-based networks. ZEN Master enhances MediaConnect, combining the scale and agility that AWS is known for with purpose-built live video operations dashboards to help video operations teams easily manage and monitor channel delivery.

MediaConnect is very powerful, and while the AWS Management Console provides the basic functions necessary to spin up and manage AWS MediaConnect flows, there can be significant challenges with managing scale and complexity that require sophisticated monitoring, customizable operations dashboard views and deeper insights. The ZEN Master live video control plane is fully integrated directly into AWS MediaConnect, unlocking simplified operations, delivering comprehensive management of AWS MediaConnect flows with greatly enhanced monitoring visibility, intelligent alerts and actionable insights that are fundamental to efficiently managed channel distribution.

Dramatically Enhanced Monitoring with ZERO Additional Egress

Seamlessly integrated directly into MediaConnect, with ZEN Master operators can easily model existing workflows or use the channel management features to provision and manage new flows. Telemetry details collected in MediaConnect are aggregated and presented in dynamic live channel dashboards, automatically identifying stream delivery performance and alerting operators whenever problems arise. ZEN Master can also provision greatly enhanced live video monitoring in Zixi Broadcaster and connect these monitoring points to managed AWS MediaConnect flows directly within the same AWS region, mitigating any additional egress fees while providing deeper insights to the health and performance of all facets of the end-to-end distribution.

- **Content Quality Analysis** – Channel content is continuously inspected, generating real-time ePSNR and eVMAF perceptual quality scores.
- **Live Impairment Detection** – Silent Audio, Still-Frame Video, Blank Video and other impairments are automatically detected and alerted.
- **Intelligent Data Platform (IDP)** – Using advanced analytics, machine learning and AI, the IDP intelligently alerts users to problems before they happen with graphs, maps, charts and data visualizations that enable users to quickly interpret stream data from a collection of 9 billion + telemetry data points per day, ensuring broadcast-quality streaming results while mitigating risk.
- **Configurable Dashboards** – ZEN Master dashboards continuously present channel health and dynamically organize flows by health and alert severity.
- **Customizable Alerts** – Build custom alert and notification profiles
- **Enhanced QoS and QoE Performance Measurement** – ZEN Master and Zixi Broadcaster add support for over 25 additional critical KPIs necessary for managing live video delivery as well as providing real-time validation with live thumbnail and audio level previews of each channel flow.

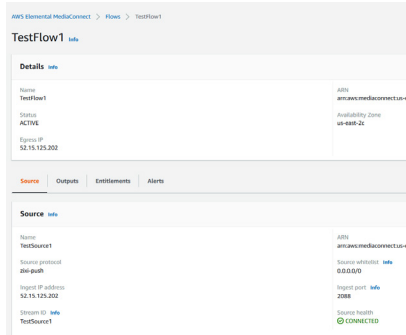




ZEN MASTER MAKES IT EASY

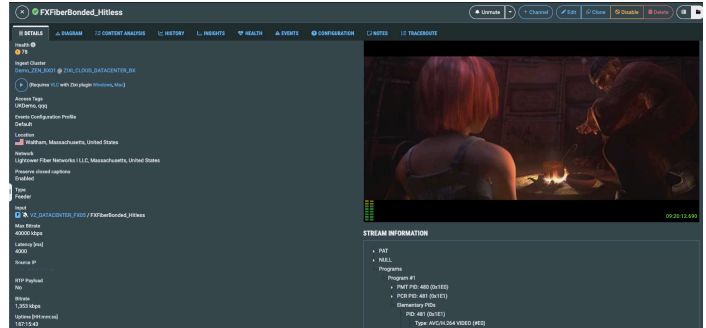
With Zixi ZEN Master, video operations can more fully and easily manage AWS MediaConnect. The operational efficiency unlocked significantly reduces costs and enables greater channel uptime. Operations teams can now manage their AWS MediaConnect flows with a level of visibility and control that was simply not available in the past.

AWS Console Flow Details

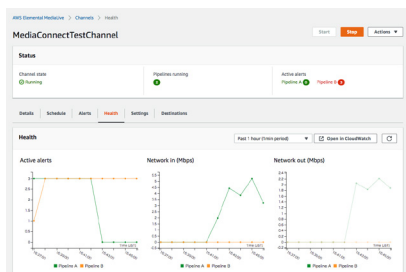


ZEN Master unlocks live predictive health score, live proxy playback options, stream heuristics, instrumented preview thumbnails with overlaid audio meters and detailed program metadata with codec details.

Zixi ZEN Master Flow Details

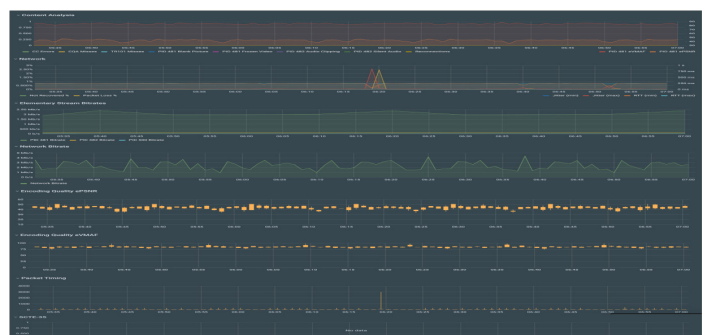


AWS Console Flow Health with Maximum 6 KPIs



With access to far more performance data, ZEN Master can more accurately identify incidents, accelerate the RCA process with guided RCA reporting and help operations teams to understand what has changed and where exactly the impacts were felt.

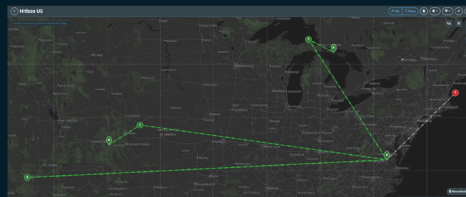
Zixi ZEN Master Flow Health with over 25 Critical KPIs



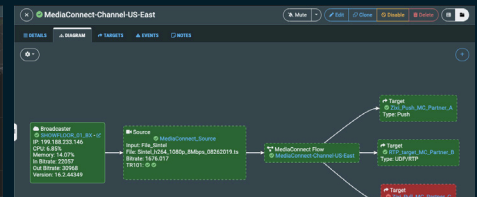
ZEN Master is the market leading live video control plane trusted every day in the most demanding media distribution environments. With ZEN Master for AWS MediaConnect, operators can take full advantage of the scale and flexibility of AWS without compromising control or visibility.



Customizable ZEN Master GRID Views dynamically sort channels based on health, providing 'at-a-glance' actionable insights.



Live video routes and their status are continuously updated in real-time maps views.



ZEN Master channel diagrams and Zixi Blast Radius impacts analysis provide detailed end-to-end channel status.

ABOUT ZIXI

Zixi provides a cloud based and on-premise Software-Defined Video Platform enabling the management, orchestration, monitoring, and delivery of broadcast-quality live and live linear video over any IP network, protocol, cloud provider or edge devices to broadcasters, enterprises, over-the-top video providers, and mobile service providers around the world. Over 14+ years, the Zixi Enabled Network (ZEN) of partners has grown to over 300 OEM and service providers with whom Zixi serves well over 700 customers representing most of the top media brands around the world with 20,000+ channels delivered daily. www.zixi.com | sales@zixi.com